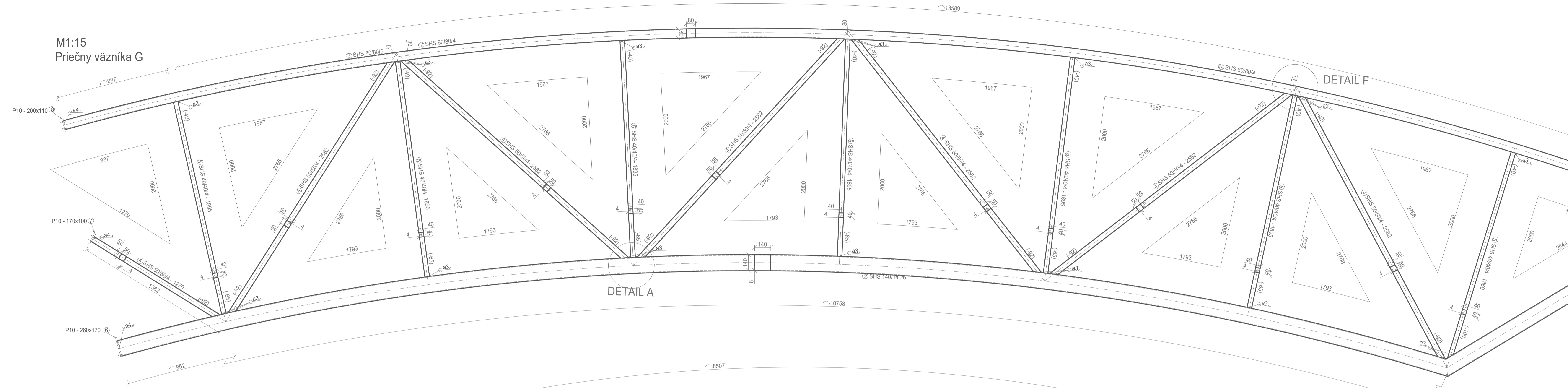


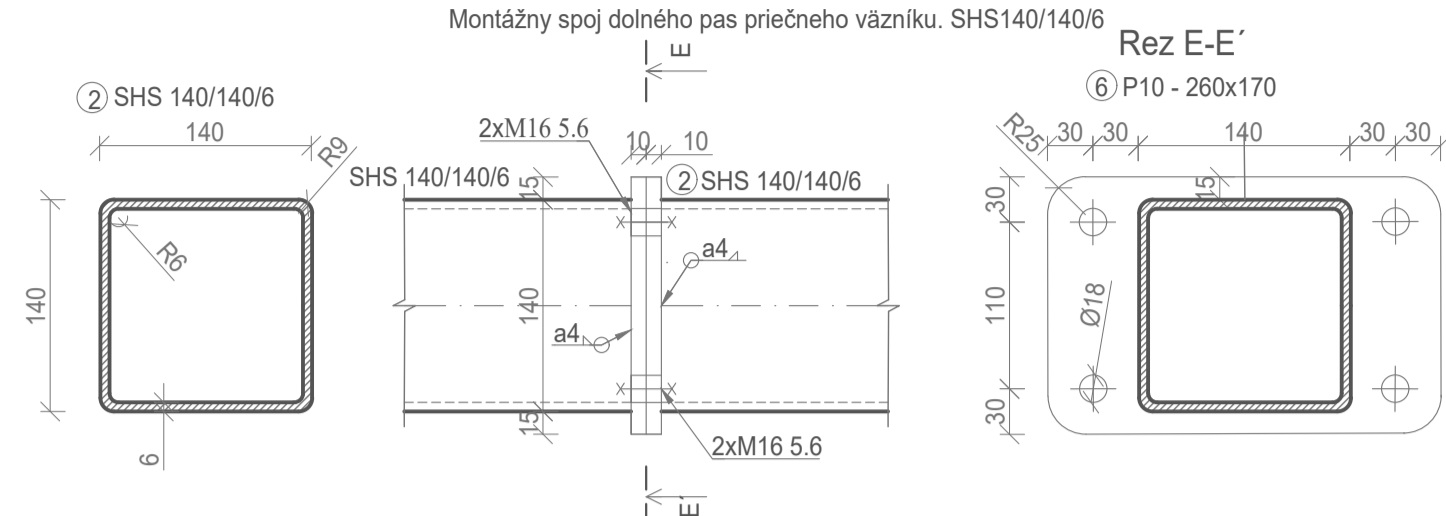
M1:15  
Priechy vznika G



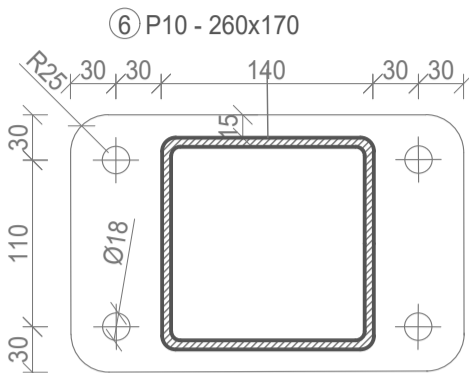
DETAIL A

DETAIL F

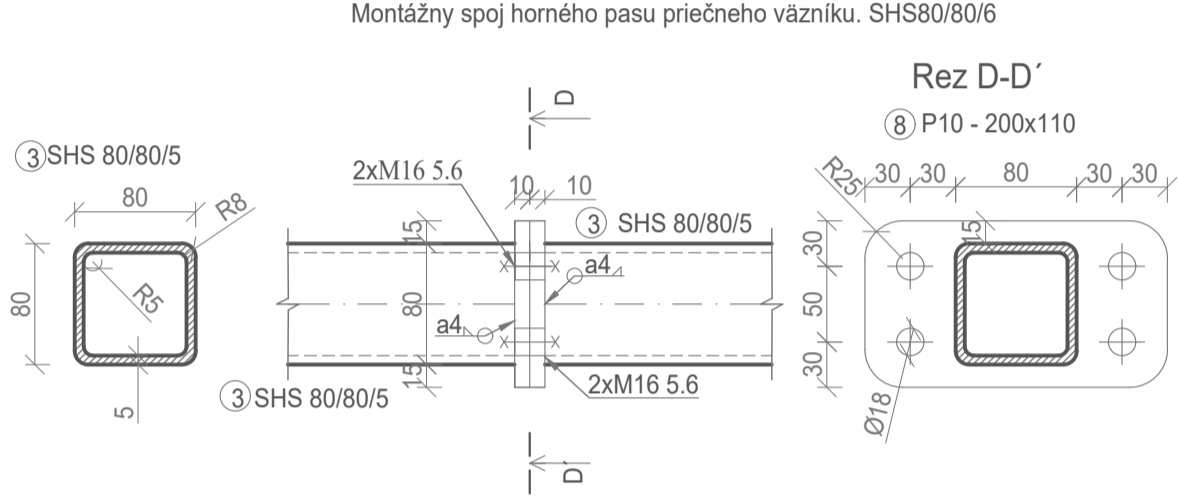
M1:5  
DETAIL D



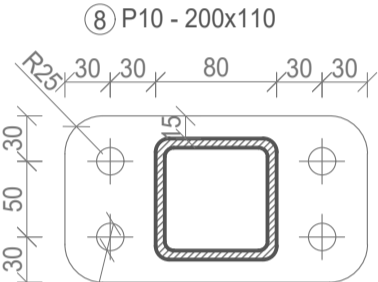
Rez E-E'



M1:5  
DETAIL B



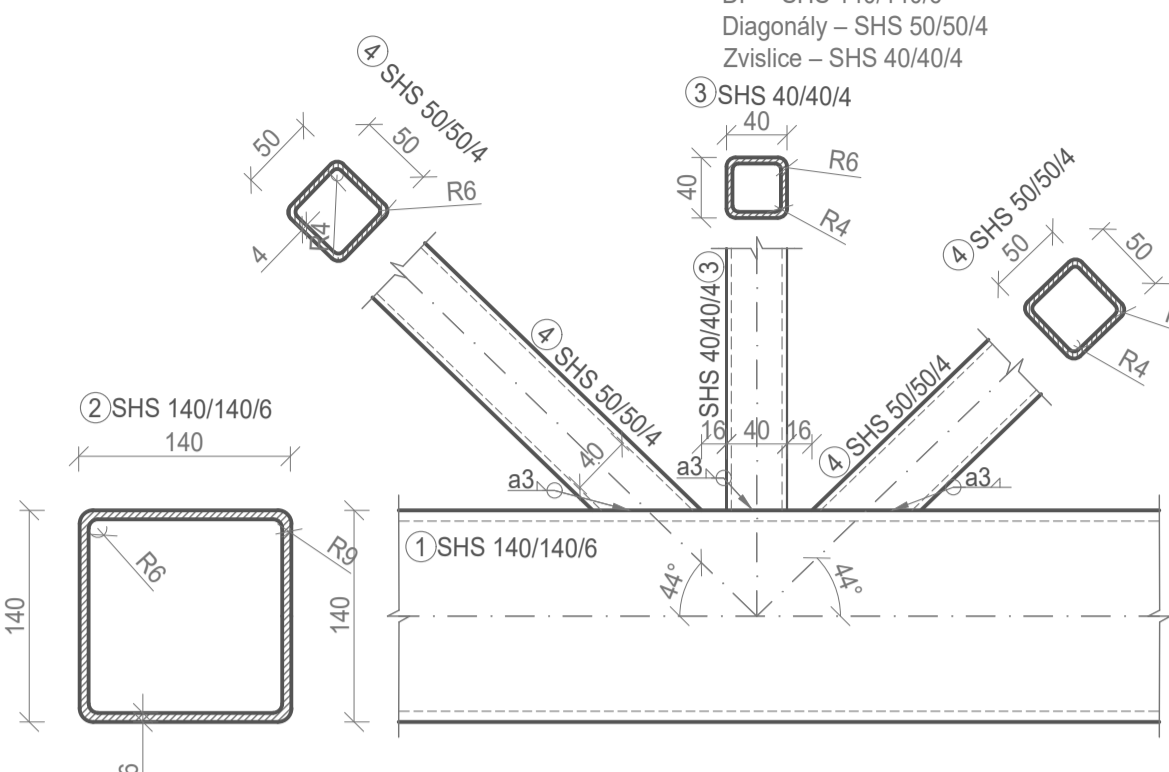
Rez D-D'



M1:5  
DETAIL A

Pripoj diagonl a zvislice na doln ps vznika G (priechy) (KT)

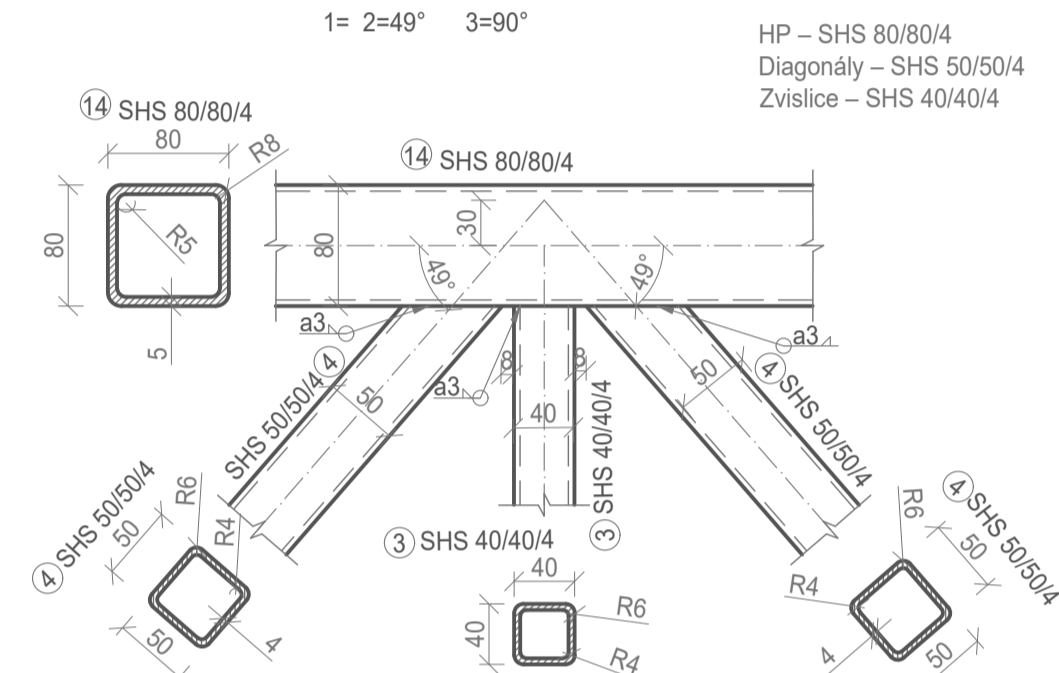
1= 2=44° 3=90°



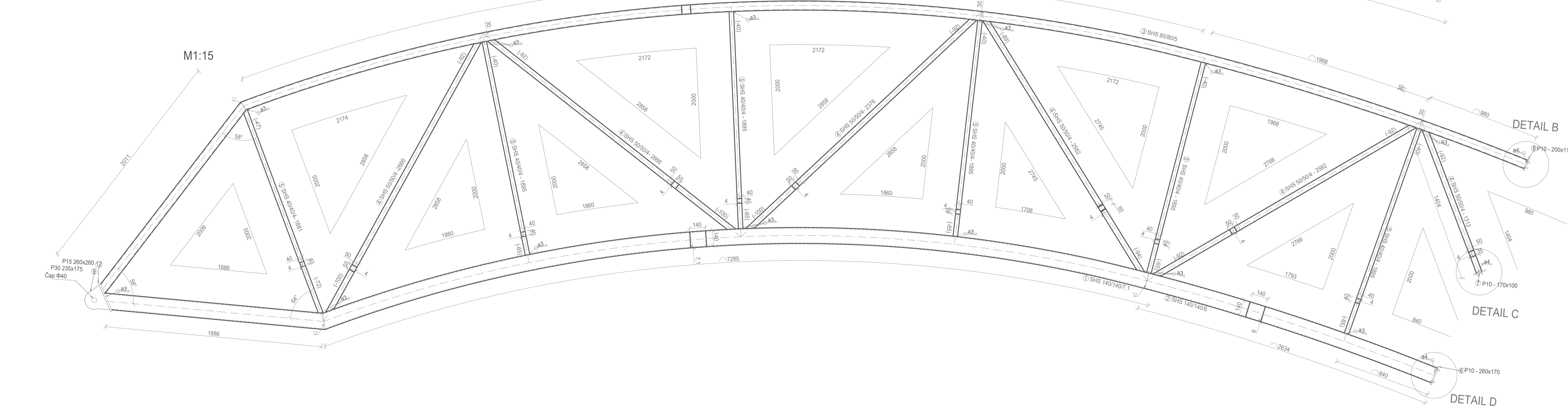
M1:5  
DETAIL F

Pripoj diagonl a zvislice na horn ps vznika G (priechy) (KT)

1= 2=49° 3=90°



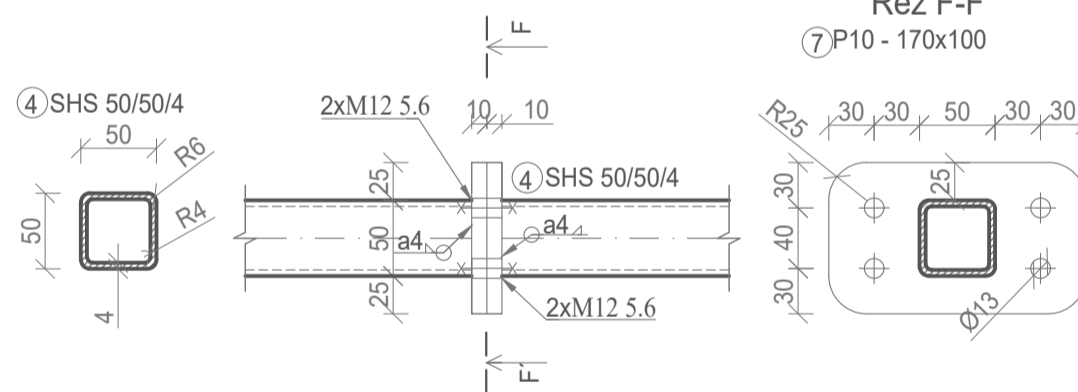
M1:15



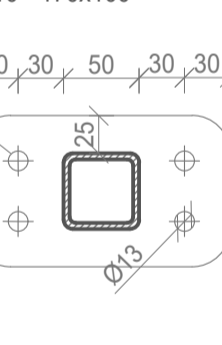
DETAIL B

M1:5  
DETAIL C

Montzn spoj diagonl priechy vznika. SHS50/50/4

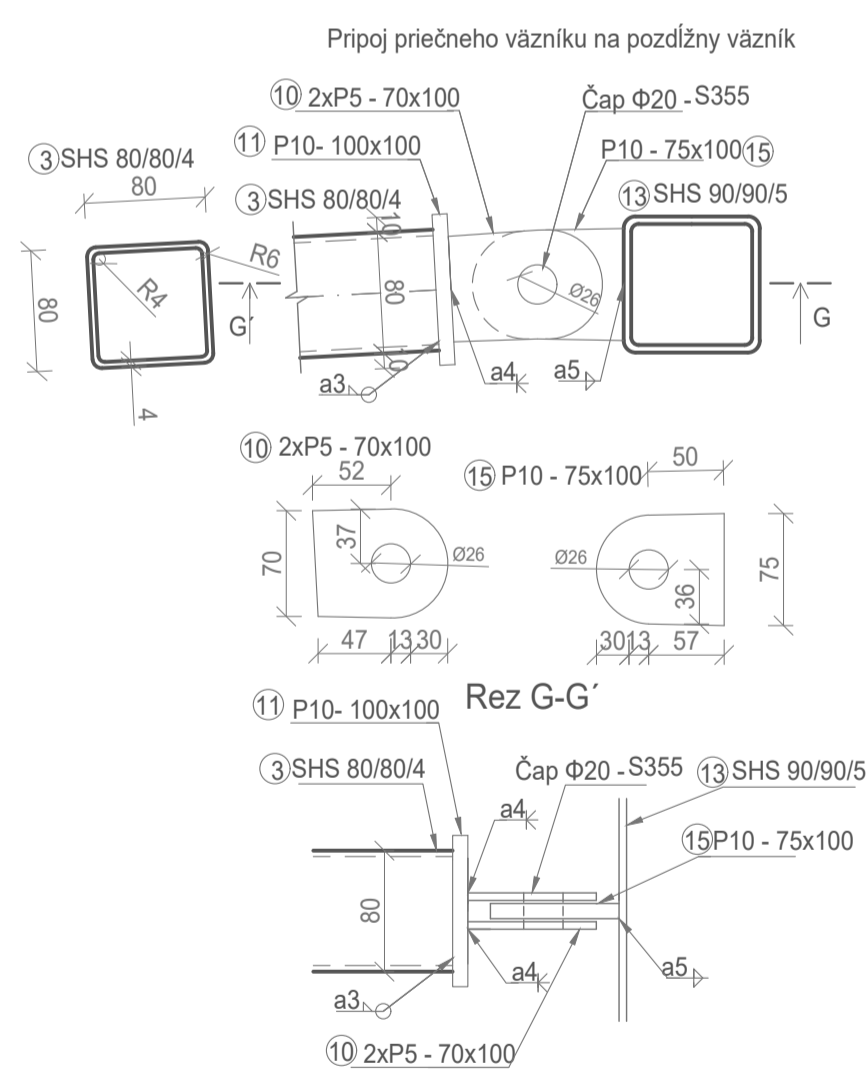


Rez F-F'

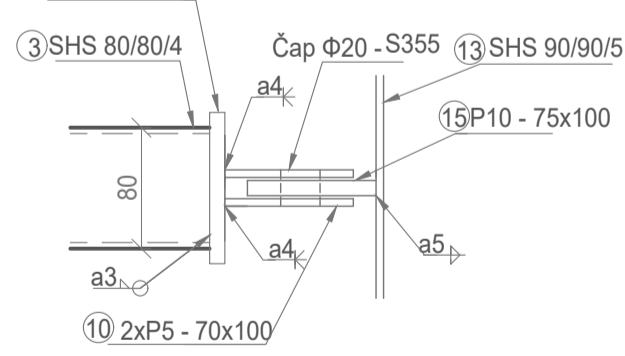


M1:5  
DETAIL E

Pripoj priechy vznika na pozdlny vznik



Rez G-G'



slo	Typ	Rozmer	Kusy	Dlka [m]	Hmotnst [kg]
1	SHS	140/140/7,1	1	9,173	337,7
2	SHS	140/140/6	1	16,89	509,1
3	SHS	80/80/5	1	16,4	224
4	SHS	50/50/4	13	24,586	197,63
5	SHS	40/40/4	13	30,926	111,67
6	P10	260x170	2	-	3,4
7	P10	170x100	2	-	2,3
8	P10	200x110	2	-	1,8
9	P30	235x175	1	-	5,8
10	P5	70x100	2	-	0,4
11	P10	100x100	1	-	0,7
12	P15	260x260	1	-	8,0
13	SHS	90/90/5	1	-	-
14	SHS	80/80/4	1	11,6	159
15	P10	75x100	1	-	0,55

#### MATERIL:

DRUH POUTEJ OCELE: S235 S355

STNKOV PLECHY: S235

PEVNOSTN TREDY POUTCH SKRUTIEK: S 6,8,8

TYPY SKRUTIEK: 24 mm, 16 mm, 12 mm

OTVORY PRE VRTANIE SKRUTIEK: 26 mm, 18 mm, 13 mm

#### POZNMKY:

POVRCHOV UPRAVA OCELOVCH PRVKOV: 80Em SikaCOR

Steel Protect VHS Rapid

NAVHRNUTE PODLA SN EN 1993 - 1

Student	Bc. Peter Šandor	
Vedci diplomov prce	Ing. Milan Pilgr, Ph.D.	
Kraj: ofonsk kraj	Miesto stavby: Litornce	
Nzov diplomov prce:		
Viceelov sportovn hala		
DTUM	01/2020	
FORMAT	A4	
MERITKO	1:15	
Nzov prlohy:	Vrobn vkres	
S. SOUPRAVY	P.5.	S. PRLOHY
	2	